

RADIATION PROTECTION



**NOLAN FILTERS,
A-P CERVICO
THORACIC**

A-P Cervico
Thoracic Compen
sating wedge

CODE C-FIL1001



**NOLAN FILTER,
A-P FEMALE
GONAD SHIELD**

A-P Female
Gonad Shield for
AP shots.

CODE C-FIL1002



**NOLAN FILTER,
A-P MALE
GONAD**

A-P Male Gonad
Shield for AP
shots.

CODE C-FIL1003



**NOLAN FILTER,
A-P PARASPINAL
BLOCKER
(TOTAL)**

A-P Paraspinal
Blocker (Total):
Totally blocks
anatomy either
side of the spine.

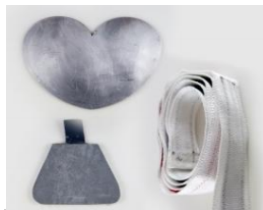
CODE C-FIL1004



**NOLAN FILTER,
A-P PARASPINAL
BLOCKER
(PARTIAL)**

A-P Paraspinal
Blocker (Partial):
Partially blocks
anatomy either
side of the spine.

CODE C-FIL1005

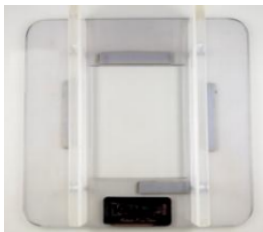


**NOLAN FILTER,
GONAD SHIELD
SYSTEM SET**

Set of male and
female gonad
shields

and belt.

CODE C-FIL1006



**NOLAN FILTER
FACE PLATE**

Mounts directly
on to the
collimator to

accommodate
multiple filters

CODE C-FIL1008



**NOLAN FILTER,
LATERAL
SPINOUS**

Lateral Spinous:
Reduces scatter
and skin dose
and

balances plate
dose by blocking
x-rays to the
spinous process.

CODE C-FIL1009



**NOLAN FILTER,
GONAD SYSTEM
BELT**

Velcro belt to
suspend gonad
shields

CODE C-FIL1010



**NOLAN FILTER
LATERAL
CERVICO
THORACIC**

Accommodates
relative thickness
of the shoulder to
the Cervical or
Thyroid region.

CODE C-FIL1011



**NOLAN FILTER,
LATERAL GONAD**

Lateral M/F
Gonad shield for
lateral exposures

CODE C-FIL1012



**NOLAN FILTER,
LATERAL
LUMBAR LUNG**

Lateral Lumbar
Lung: Lumbar
Lung shield for
lateral exposures

CODE C-FIL1013



**NOLAN FILTER,
LATERAL
THORACIC**

Lateral Thoracic.
Compensating
wedge

CODE C-FIL1014



**NOLAN FILTER
POINT FILTERS**

POINT FILTERS.
*Can be used for
compensation
in all views.*

Adjust the
exposure to the
place according
to anatomical
thickness. Lower
until the bottom
is just above the
iliac crests.

CODE C-FIL1015



**LATERAL
STERNUM**

Lateral Sternum:
Shield for lateral
exposures

CODE C-FIL1017



**OCTOSTOP
BOOMERANG
FILTER**

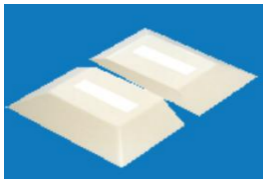
Regular
Boomerang L29
x W19 x H4.5 cm
approx.; 1.2 Kg.

CODE C-FIL1018



**OCTOSTOP
INGOT FILTER**

Ingot Filter
L29 x W19 x H4.5
cm approx 1.8kg.
CODE C-FIL1019



**OCTOSTOP HALF
INGOT FILTER**

Half Ingot Filter
L29 x W19 x H4.5
cm approx 1.8kg.
CODE C-FIL1034



**LEAD GOWN
PRICE
CALCULATOR**

Choose your Size
(XS) X Small: 18" / 46 cm Waist - Fits Chest 30-34" / 76.2-86.4cm
(S) Small: 20" / 51 cm Waist - Fits Chest 34-38" / 86.4-96.5cm
(M) Medium: 22" / 56 cm Waist - Fits Chest 38-42" / 96.5-108.7cm
(L) Large: 24" / 61 cm Waist - Fits Chest 42-46" / 106.7-116.8cm
Regular lead =
0.5mm
**CODE C-
PRO1000**



**OPEN PALM
SHIELD
CODE C-
PRO1001**



**VET MITT
CODE C-
PRO1002**



**LEAD THYROID
COLLAR**

Quick Release Collar offers the same look and comfort as our model 621U, but without the hook & loop closure. Rear buckle closure. Available in our wide selection of nylons, ripstops and designer fabrics.

- **Standard Protection:** 0.5mm Pb Equivalency

New Style Thyroid Collar offers a trim yet shielded and comfortable design. Includes binding and rear hook & loop closure.



**WALL MOUNT
SWING ARM
APRON RACK**

Wall Mount Swing Arm Apron Rack features 5 individual chrome shoulder shape swing arms that fold flush against the wall. Available in right and left folding models. Simply hang two models side-by-side for a 10 hanger wall console unit.

**CODE C-
PRO1005**



**PEG RACK WITH
8 PEGS**

- Peg Rack is economical for the quick and easy storage of single or multiple aprons.
- Powder coated steel construction.
- Easy installation.

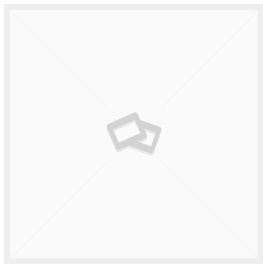
**CODE C-
PRO1008**



- **Standard Protection:** 0.5mm Pb Equivalency

Please note:
Colour is light blue

CODE C-PRO1003-L



MOBILE APRON RACK 1.17MT
CODE C-PRO1009



HEAVY-DUTY APRON HANGER
CODE C-PRO1013



CLOSED LOOP APRON HANGER
CODE C-PRO1014



VINYL LEAD SEAMLESS GLOVES
CODE C-PRO1015