

**RADIATION PROTECTION**



**NOLAN FILTERS,  
A-P CERVICO  
THORACIC**

A-P Cervico  
Thoracic Compen  
sating wedge

**CODE** C-FIL1001



**NOLAN FILTER,  
A-P FEMALE  
GONAD SHIELD**

A-P Female  
Gonad Shield for  
AP shots.

**CODE** C-FIL1002



**NOLAN FILTER,  
A-P MALE  
GONAD**

A-P Male Gonad  
Shield for AP  
shots.

**CODE** C-FIL1003



**NOLAN FILTER,  
A-P PARASPINAL  
BLOCKER  
(TOTAL)**

A-P Paraspinal  
Blocker (Total):  
Totally blocks  
anatomy either  
side of the spine.

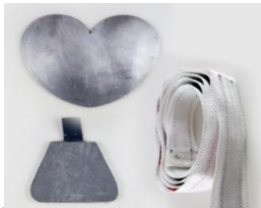
**CODE** C-FIL1004



**NOLAN FILTER,  
A-P PARASPINAL  
BLOCKER  
(PARTIAL)**

A-P Paraspinal  
Blocker (Partial):  
Partially blocks  
anatomy either  
side of the spine.

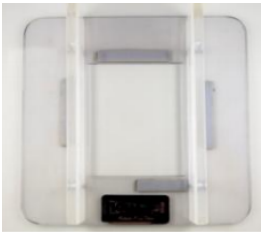
**CODE** C-FIL1005



**NOLAN FILTER,  
GONAD SHIELD  
SYSTEM SET**

Set of male and  
female gonad  
shields and belt.

**CODE** C-FIL1006



**NOLAN FILTER  
FACE PLATE**

Mounts directly  
on to the  
collimator to

accommodate  
multiple filters

**CODE** C-FIL1008



**NOLAN FILTER,  
LATERAL  
SPINOUS**

Lateral Spinous:  
Reduces scatter  
and skin dose  
and

balances plate  
dose by blocking  
x-rays to the  
spinous process.

**CODE** C-FIL1009



**NOLAN FILTER,  
GONAD SYSTEM  
BELT**

Velcro belt to  
suspend gonad  
shields

**CODE C-FIL1010**



**NOLAN FILTER  
LATERAL  
CERVICO  
THORACIC**

Accommodates  
relative thickness  
of the shoulder to  
the Cervical or  
Thyroid region.

**CODE C-FIL1011**



**NOLAN FILTER,  
LATERAL GONAD**

Lateral M/F  
Gonad shield for  
lateral exposures

**CODE C-FIL1012**



**NOLAN FILTER,  
LATERAL  
LUMBAR LUNG**

Lateral Lumbar  
Lung: Lumbar  
Lung shield for  
lateral exposures

**CODE C-FIL1013**



**NOLAN FILTER,  
LATERAL  
THORACIC**

Lateral Thoracic.  
Compensating  
wedge

**CODE C-FIL1014**



**NOLAN FILTER  
POINT FILTERS**

**POINT FILTERS.**  
*Can be used for  
compensation  
in all views.*

Adjust the  
exposure to the  
place according  
to anatomical  
thickness. Lower  
until the bottom  
is just above the  
iliac crests.

**CODE C-FIL1015**



**LATERAL  
STERNUM**

Lateral Sternum:  
Shield for lateral  
exposures

**CODE C-FIL1017**



**OCTOSTOP  
BOOMERANG  
FILTER**

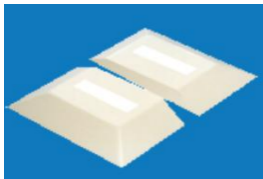
Regular  
Boomerang L29  
x W19 x H4.5 cm  
approx.; 1.2 Kg.

**CODE C-FIL1018**



**OCTOSTOP  
INGOT FILTER**

Ingot Filter  
L29 x W19 x H4.5  
cm approx 1.8kg.  
**CODE C-FIL1019**



**OCTOSTOP HALF  
INGOT FILTER**

Half Ingot Filter  
L29 x W19 x H4.5  
cm approx 1.8kg.  
**CODE C-FIL1034**



**LEAD GOWN  
PRICE  
CALCULATOR**

Choose your Size  
(XS) & Small: 18" / 46 cm Waist - Fits Chest 30-34" / 76.2-86.4cm  
(S) Small: 20" / 51 cm Waist - Fits Chest 34-38" / 86.4-96.5cm  
(M) Medium: 22" / 56 cm Waist - Fits Chest 38-42" / 96.5-108.7cm  
(L) Large: 24" / 61 cm Waist - Fits Chest 42-46" / 106.7-116.8cm

Regular lead =  
0.5mm  
**CODE C-  
PRO1000**



**OPEN PALM  
SHIELD  
CODE C-  
PRO1001**



**VET MITT  
CODE C-  
PRO1002**



**LEAD THYROID  
COLLAR**

**Quick Release Collar** offers the same look and comfort as our model 621U, but without the hook & loop closure. Rear buckle closure. Available in our wide selection of nylons, ripstops and designer fabrics.

- **Standard Protection:** 0.5mm Pb Equivalency

**New Style Thyroid Collar** offers a trim yet shielded and comfortable design. Includes binding and rear hook & loop closure.



**WALL MOUNT  
SWING ARM  
APRON RACK**

Wall Mount Swing Arm Apron Rack features 5 individual chrome shoulder shape swing arms that fold flush against the wall. Available in right and left folding models. Simply hang two models side-by-side for a 10 hanger wall console unit.

**CODE C-  
PRO1005**



**PEG RACK WITH  
8 PEGS**

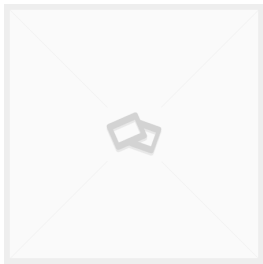
- Peg Rack is economical for the quick and easy storage of single or multiple aprons.
- Powder coated steel construction.
- Easy installation.

**CODE C-  
PRO1008**

- **Standard Protection:** 0.5mm Pb Equivalency

Please note:  
Colour is light blue

**CODE C-PRO1003-L**



**MOBILE APRON RACK 1.17MT**  
**CODE C-PRO1009**



**HEAVY-DUTY APRON HANGER**  
**CODE C-PRO1013**



**CLOSED LOOP APRON HANGER**  
**CODE C-PRO1014**



**VINYL LEAD SEAMLESS GLOVES**  
**CODE C-PRO1015**