

UNCATEGORISED



**ROTOGRAPH
PRIME 3D - CBCT**

Rotograph Prime 3D is a new dental imaging system.

CODE N/A



**ROTOGRAPH
PRIME - OPG**

CODE N/A



**VILLA
ROTOGRAPH
EVO D OPG**

CODE N/A



**OPG CBCT 3D
DENTAL SYSTEM**

[villa-rotograph-evo-3d](#)

CODE
2VillaRoto3D



**DIGITAL OPG
SYSTEM**

[villa-rotograph-evo-d-speci](#)

CODE
2VillaRotoD



**VILLA
ROTOGRAPH
PRIME DIGITAL
OPG SYSTEM**

[villa-rotograph-prime-speci](#)

CODE
2VillaRotoPrime



**FULL SPINE DR
PANEL
LONGTAIL**

[Longtail info](#)

Ideally suited to low dose leg length and other orthopedic studies.

Improved Emergency Department workflow with two second trauma scan to aid triage.

Can be table or



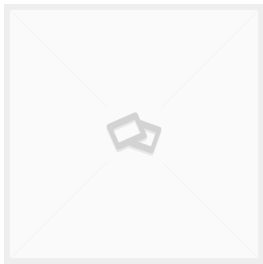
**X-RAY ON LIGHT

CODE DR05



trolley mounted
or wall mounted
and
interchangeably
swapped
between the two.

CODE
ATXDRLong



**EQUINE SPINAL
LONGTAIL FLAT
PANEL DR
PACKAGE**

The Longtail is the world’s first monolithic full-spine flat-panel DR detector. No more long scan wait, no image stitching, no image gaps, and no plate overlap.

It is the first of it’s kind to produce long-bone and full-spine digital studies instantaneously with the highest geometric accuracy.

At 44 inch (112 cm) long, the Longtail can take a full spine 42 x 17 inch (108 x 43 cm).

Included:

- 43” x 17” Longtail Flat DR Panel - Wireless Gadox
- Lenovo Touch screen all in one computer
- ECOM DROC Acquisition Software
- Training & Installation
- ATX Cloud Pacs



**BOOMERANG
OCTOSTOP
FILTER**
CODE OCT-01V



**INGOT
OCTOSTOP
FILTER**
CODE OCT-02V



**BOOMERANG/IN
GOT/GENTLE
SLOPE/LITTLE
PRISM**
CODE OCT-KIT

DICOM
Image
Storage
platform
• 4 Years
warranty
&
Assurance
support

[Please contact us
for pricing](#)

CODE EQU-
GEN-10012



LEAD MITTENS
CODE PS101MIT



**GRACE DENTAL
CHAIR QL-3168**

The GRACE
Dental Unit is a
combination of
superior Quality,
Hygiene,
Performance
Technology and
Ergonomics.
Made in Taiwan.

CODE QL 3168